



December 3-6, 2007, Santa Clara Marriott, Santa Clara, CA

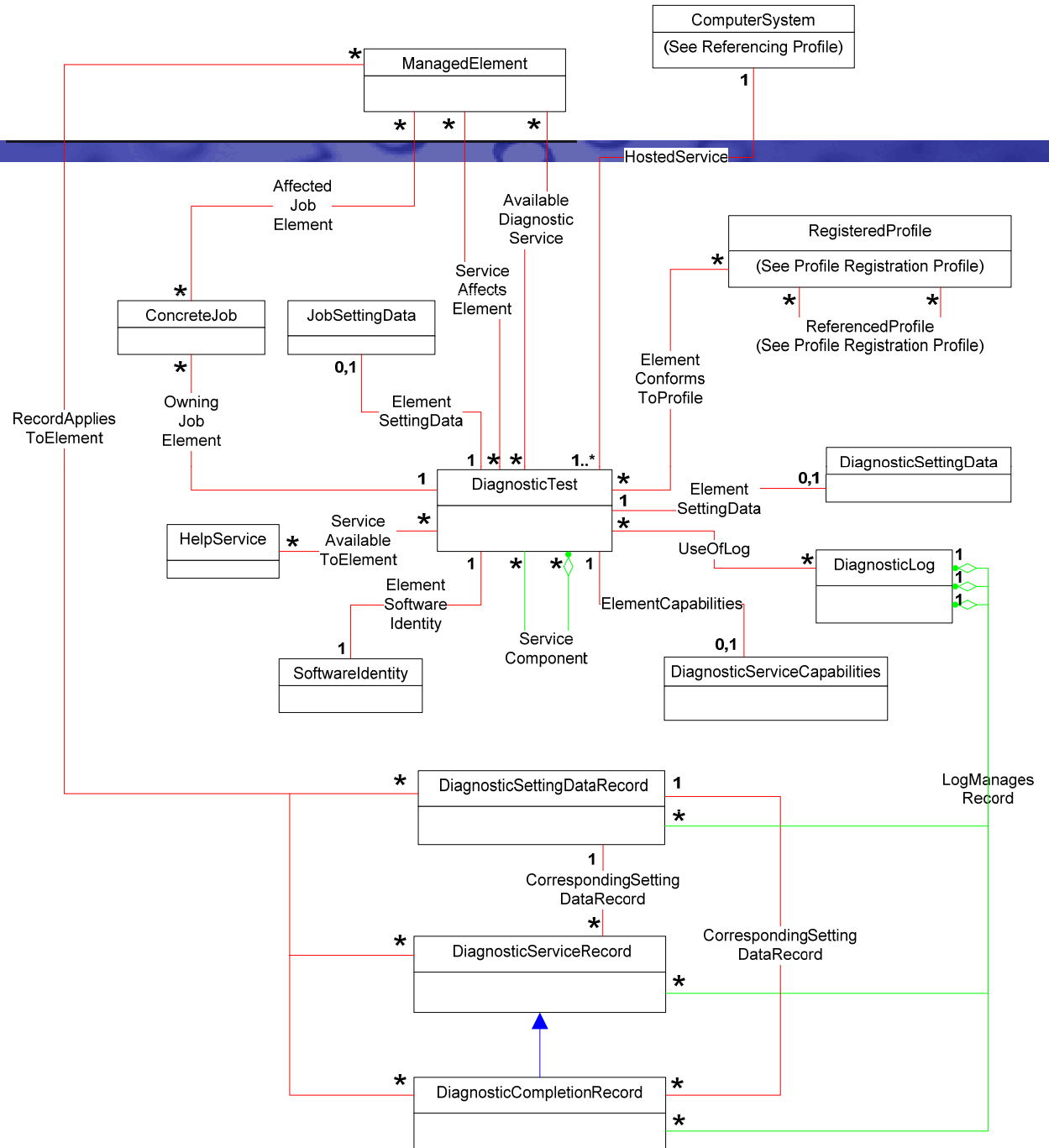
CDM development tools/aids

Andre Asselin

IBM



CDM model (from CDM profile)





Classes referenced in the CDM profile

Classes - Mandatory

- CIM_DiagnosticTest
- CIM_DiagnosticLog
- CIM_DiagnosticServiceRecord
- CIM_DiagnosticCompletionRecord
- CIM_ConcreteJob

- CIM_HelpService
- CIM_RegisteredProfile
- CIM_SoftwareIdentity

Optional

- CIM_DiagnosticServiceCapabilities
- CIM_DiagnosticSettingData
- CIM_DiagnosticSettingDataRecord
- CIM_JobSettingData

Associations - Mandatory

- CIM_AvailableDiagnosticService
- CIM_UseOfLog
- CIM_LogManagesRecord

- CIM_OwningJobElement
- CIM_ServiceAffectsElement
- CIM_ServiceAvailableToElement
- CIM_HostedService
- CIM_ElementSoftwareIdentity

Optional

- CIM_AffectedJobElement
- CIM_CorrespondingSettingDataRecord
- CIM_ElementCapabilities
- CIM_ElementSettingData
- CIM_RecordAppliesToElement
- CIM_ServiceComponent



- CDM Forum doesn't require IHVs to use any particular SDK / tool
- CDM Forum is interested in diagnostics that conform to the Diagnostics Profile



Development options

- WBEM Solutions SDK
- CIMPLE
- HP CDM SDK



WBEM Solutions SDK

- (See separate slides)



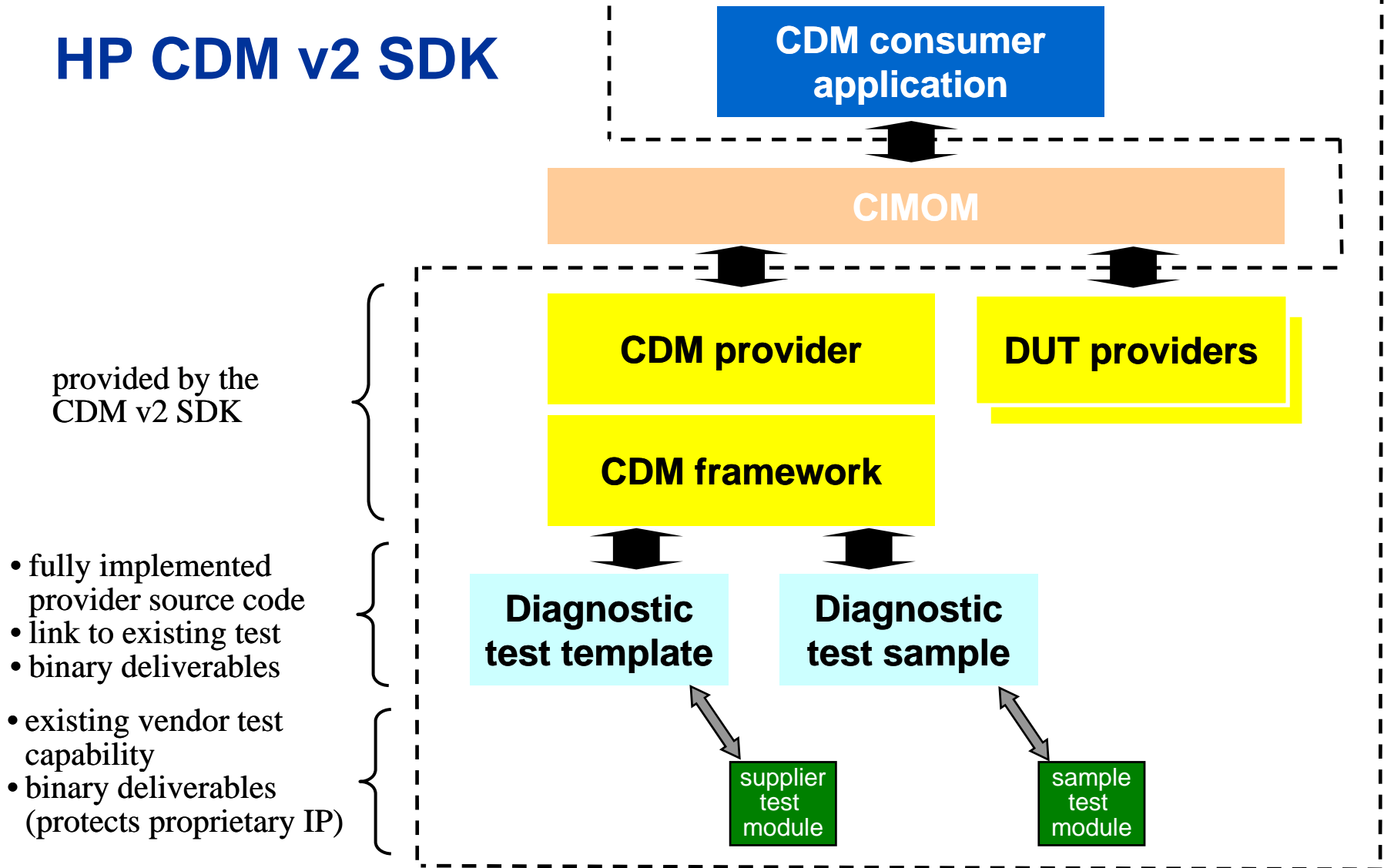
CIMPLE

- (See separate slides)



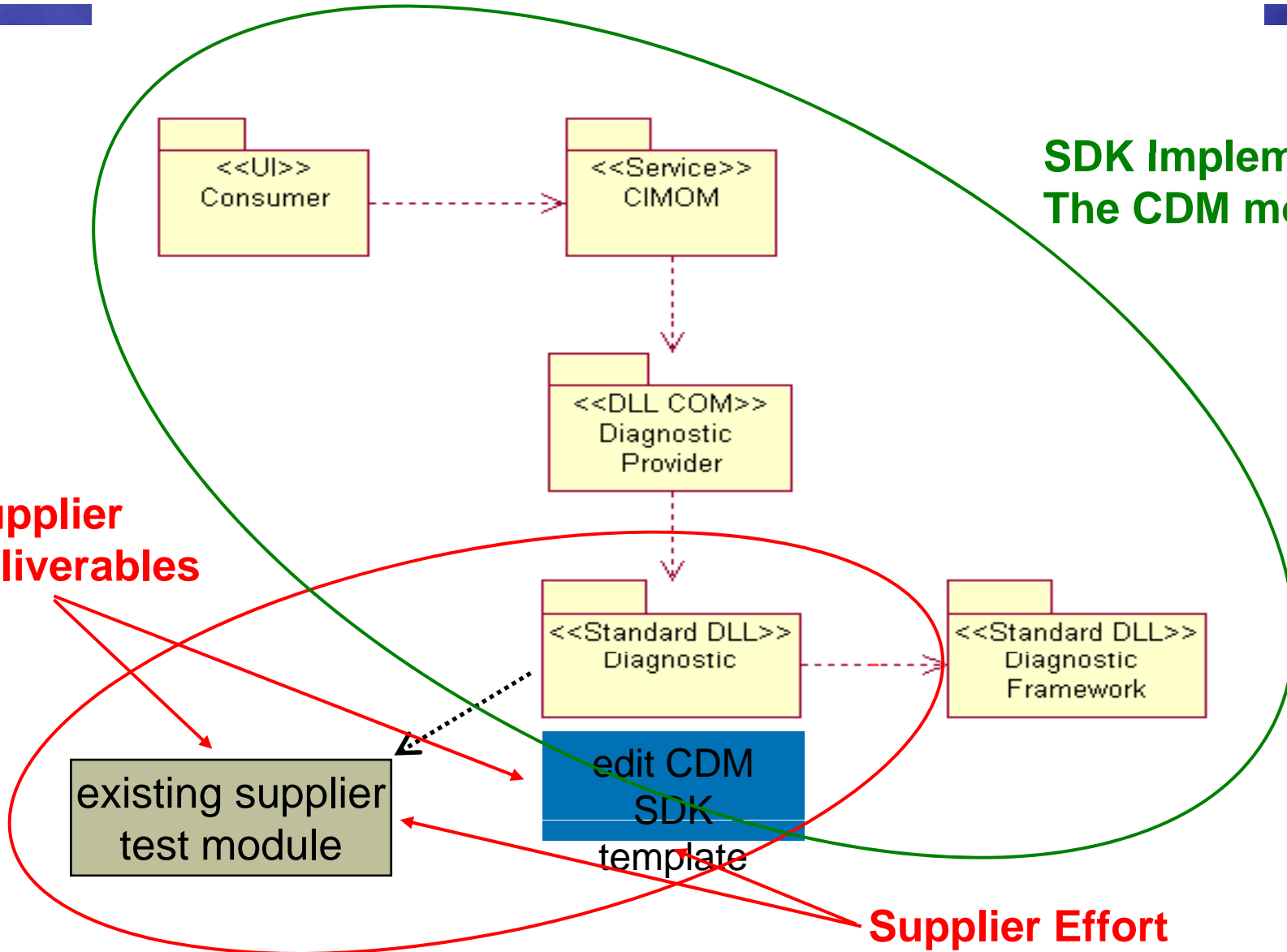
HP CDM SDK

HP CDM v2 SDK



**SDK Implements
The CDM model**

**Supplier
deliverables**



Supplier Effort



HP CDM SDK Interfaces

- **Diagnostics Data Interface**
 - CDM model abstractions
 - e.g. DiagnosticName, DiagnosticDescription, CommandLine, Characteristics, TestDuration, etc.
- **Diagnostic Execution Interface**
 - Handling test Command line arguments
 - Handling messages from test execution
 - e.g. UpdatePercentage, FailureInformation, TestInformationLogging, etc.
- **Mapping test to supported Hardware (XML)**